



MASTER LED tube Mains T5

MAS LEDtube 1500mm HO 26W 830 T5

MASTER, LEDtube, T5, Mains, 1500 mm, 26 W, 49W TL5 HO, 3000 K, 3600 lm, CRI 80, 60000 hour(s)

The new Philips Master LEDtube Mains T5 brings simplicity to your lighting project. You don't need to pay attention to the driver technology anymore. Thanks to a unique design, Philips MASTER LEDtube Mains T5 installs in luminaires operating on mains power connection. So simple to operate! . Perfectly safe, reliable & easy to install Philips MASTER LEDtube Mains T5 is the ideal alternative to standard fluorescent tubes to maximize value over lifetime with high energy saving and lower maintenance costs.

Product data

General Information	
Cap-Base	G5
Nominal lifetime	60,000 hour(s)
Switching Cycle	200,000
Lighting Technology	LEDtube
Flux measurement reference	Sphere
Warranty period	5 years

Light Technical	
Color Code	830 [CCT of 3000K]
Beam Angle (Nom)	200 degree(s)
Luminous Flux	3,600 lm
Color Designation	White (WH)
Correlated Color Temperature (Nom)	3000 K

Luminous Efficacy (rated) (Nom)	138 lm/W
Color Consistency	<6
Color rendering index (CRI)	80
LLMF At End Of Nominal Lifetime (Nom)	70 %
Photobiological safety according to EN 62471	RG0

Operating and Electrical	
Line Frequency	50 to 60 Hz
Input Frequency	50 to 60 Hz
Power Consumption	26 W
Lamp Current (Nom)	125 mA
Starting Time (Nom)	0.5 s
Warm-up time to 60% light	0.5 s
Power Factor (Fraction)	0.92

MASTER LED tube Mains T5

Voltage (Nom)	220-240 V
LED alternative to fluorescent lamp power	49W TL5 HO
Inrush current at mains	20
Max. lamp no. on MCB B type 10A – Mains	31
Max. lamp no. on MCB B type 10A – EM ballast without Compensation Capacitor.	-
Max. lamp no. on MCB B type 10A – EM ballast with Compensation Capacitor.	-
Max. lamp no. on MCB B type 16A – Mains	50
Max. lamp no. on MCB B type 16A – EM ballast without Compensation Capacitor.	-
Max. lamp no. on MCB B type 16A – EM ballast with Compensation Capacitor.	-
Ballast Compatibility	Mains

Temperature

T-Case Maximum (Nom)	65 °C
----------------------	-------

Controls and Dimming

Dimmable	No
----------	----

Mechanical and Housing

Bulb Finish	Frosted
Bulb Material	Glass
Product Length	1,500 mm
Bulb Shape	T5
Net Weight (Piece)	0.285 kg

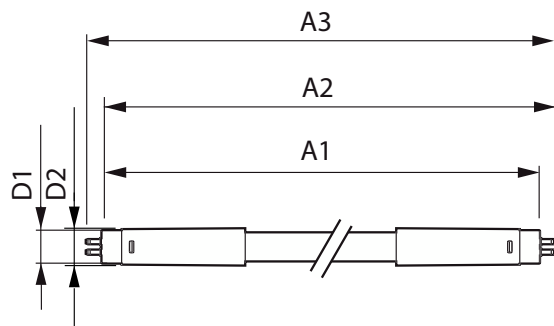
Approval and Application

Energy Efficiency Class	D
Energy Saving Product	Yes
Approval Marks	RoHS compliance
Energy Consumption kWh/1000 h	26 kWh
EPREL Registration Number	1476412
CE mark	Yes
EU RoHS compliant	Yes
Flickering value (PstLM) - Flickering value as per EN 61000-3-3	1
Stroboscopic effect visibility measure (SVM)	0.4
Ambient temperature range	-20 to +45 °C

Product Data

Order product name	MAS LEDtube 1500mm HO 26W 830 T5
Full product name	MAS LEDtube 1500mm HO 26W 830 T5
Full product code	871869681929600
Order code	929001908802
Material Nr. (12NC)	929001908802
Numerator - Quantity Per Pack	1
EAN/UPC - Product/Case	8718696819296
Numerator - Packs per outer box	10
EAN/UPC - Case	8718696819302

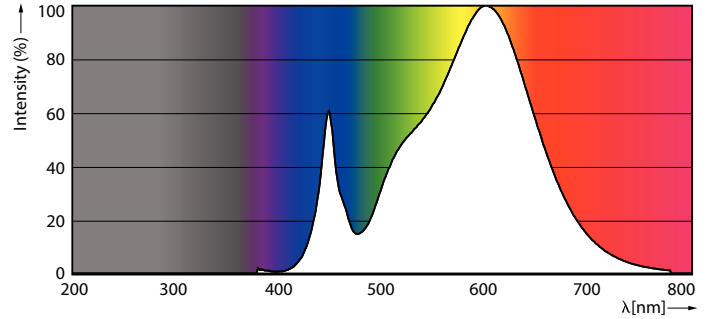
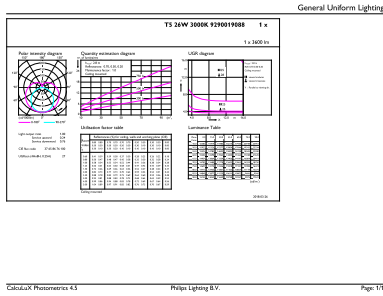
Dimensional drawing



Product	D1	D2	A1	A2	A3
MAS LEDtube 1500mm HO 26W 830 T5	15.5 mm	17.1 mm	1,449 mm	1,456 mm	1,463 mm

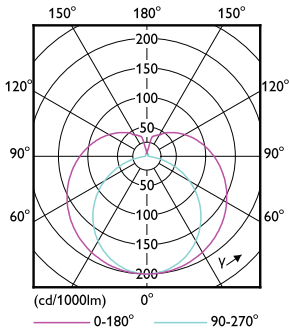
MASTER LED tube Mains T5

Photometric data



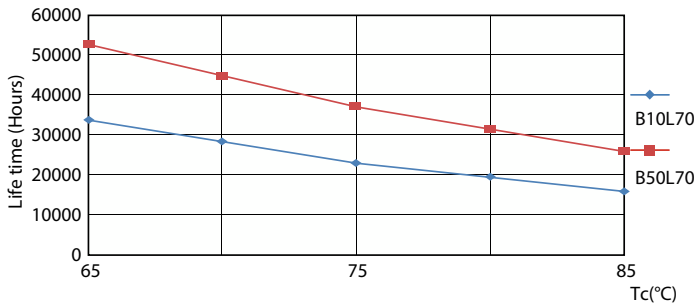
General uniform lighting - MAS LEDtube 1500mm HO 26W 830 T5

Spectral Power Distribution Colour - MAS LEDtube 1500mm HO 26W 830 T5

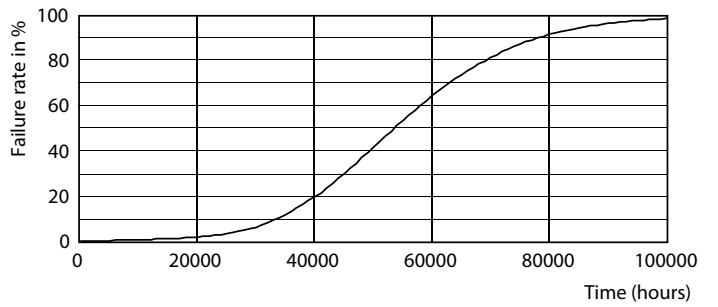


Light Distribution Diagram - MAS LEDtube 1500mm HO 26W 830 T5

Lifetime



LifetimeVsTc



Life Expectancy Diagram

MASTER LED tube Mains T5

Lifetime



Lumen Maintenance Diagram - MAS LEDtube 1500mm HO 26W 830 T5

Lumen Maintenance Diagram - MAS LEDtube 1500mm HO 26W 830 T5



FailureRate

